

What is Purdue Air Link 2.0?

Purdue Air Link (PAL) 2.0 is the standard method for connecting to Purdue’s wireless network. PAL 2.0 does not use virtual private network (VPN) connections for authentication, so the connection is faster and more reliable.

Why should I use PAL 2.0?

PAL 2.0 is a new method of connecting to and using the wireless network at Purdue’s West Lafayette campus. It is more secure, reliable, and convenient than the first version of PAL. It uses encrypted and authenticated connections, also known as Wi-Fi protected access (WPA) connections, to Purdue’s wireless access points. By using PAL 2.0, users are less likely to experience dropped connections, and they have the ability to roam to other access points without interruption.

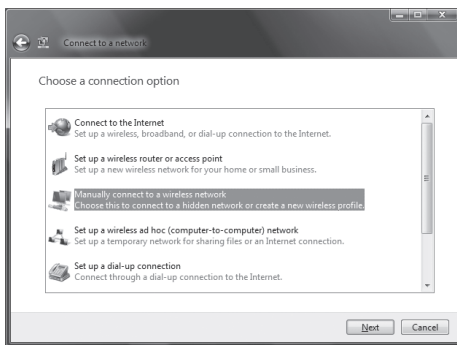
How do I connect to PAL 2.0 with Windows Vista?

1 Click on the **Start** button, and then click on **Connect To**.

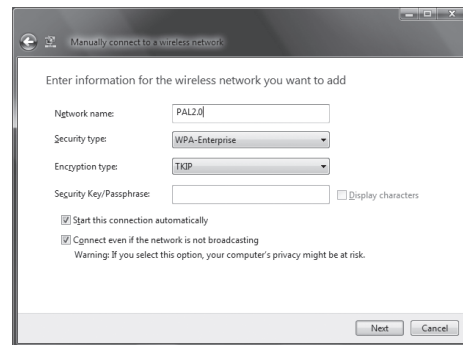
2 Click on **Set up a connection or network**.



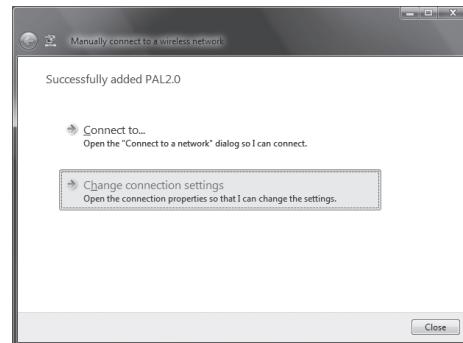
3 Click on **Manually connect to a wireless network**, and then click **Next**.



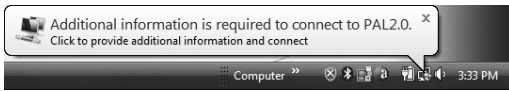
4 Type “PAL2.0” (without spaces) for the **Network name**, select **WPA-Enterprise** for the **Security type**, select both checkboxes at the bottom of the window, and then click **Next**.



5 Click on **Close**.



6 Click on the notification balloon that pops up in the lower-right corner of your screen.



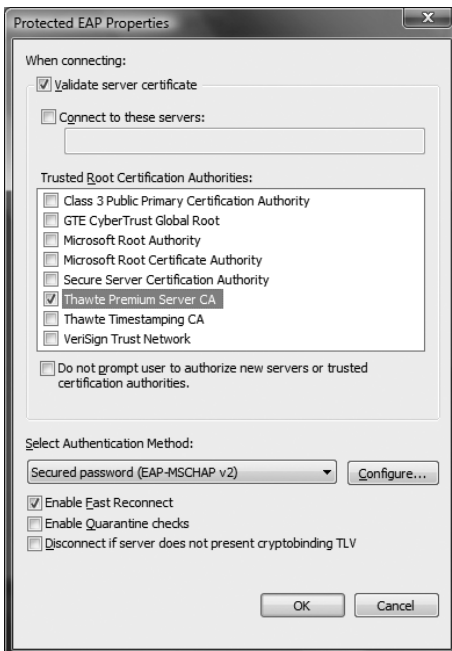
7 On the **Validate Server Certificate** window that appears, click **OK**.

8 Go to **Start**, select **Network**, and click on **Network and Sharing Center**.

9 Click on **Manage Wireless Networks**, right-click on the **PAL 2.0 connection**, and then select **Properties**.

10 In the window that appears, click on the **Security** tab, and then click **Settings**.

11 Select **Thawte Premium Server CA** from the **Trusted Root Certification Authorities** box, and then click **Configure**.

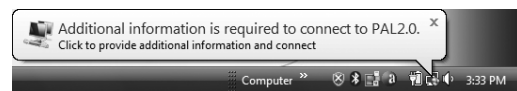


12 Deselect the checkbox in the window that appears, and then click **OK**.



13 Click **OK** two more times to close out of the wireless network properties.

14 Click on the notification balloon that pops up in the lower-right corner of your screen.



15 Enter your career account user name and password in the **User name** and **Password** fields (leave the **Logon domain** field blank), and click **OK**.

Mac users: Locate instructions for using PAL 2.0 with Mac OS 10.3 or 10.4 at <http://www.itap.purdue.edu/airlink>.